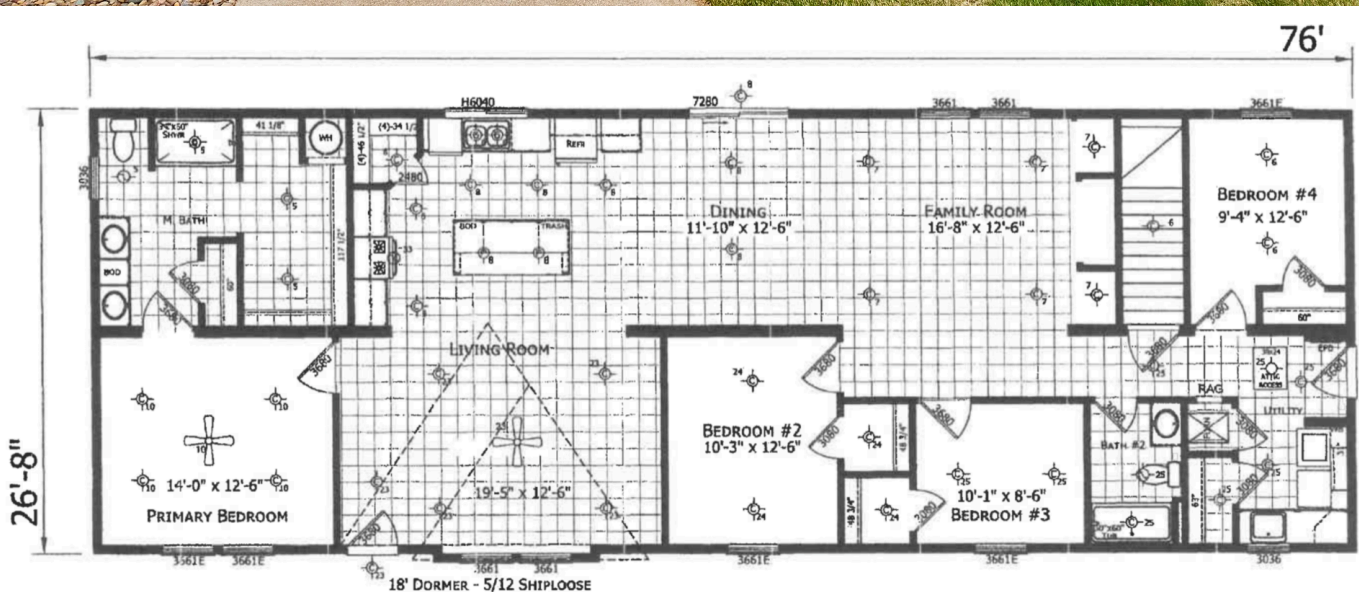


# MONTEREY

4 BEDROOM, 2 BATH

2,036 SQ. FT.



# OPTIONS

4 BEDROOM, 2 BATHROOM

2,025 SQ. FT.



Stairwell with door	\$1200	Kitchen picture window	\$259
6" Bump Out	\$490	M Bath wdw & Utility	\$1020
5/12 Roof Pitch	\$4490	Pull wire for Phone Jack	\$29
On-Site Dormer	\$2950	Extra exterior recept	\$95
Coffer Ceiling M Bdrm	\$920	1-1/2 Conduit drop at fuse box	\$29
Upgrade Carpet	\$440	Pendant lights over island	\$130
Lino non std area	\$218	Add 8, 4" can lights	\$312
Perimeter heat T/O	\$210	Signature lighting package	\$599
50 Gal Elec WH IPO 30 gal	\$135	Fan mount w/dbl switch	\$100
Frost free faucet	\$70	White jamb trim casing	\$499
Main Water shutoff	\$59	Crescent edge entertainment center	\$675
Vinyl shakes in dormer	\$450	Shiplab accent wall in ent center	\$800
Upgrade Vinyl siding	\$1520	Ozark Shadows cabinet	\$700
OSB Sheathing	\$1040	Cabinet over fridge	\$129
Vinyl window lineals	\$420	42" Cabinets	\$499
6' Patio IPO std wdw	\$928	Pull out trash can	\$285
Utility sink and cabinets	\$610	Bank of drawers M bath	\$175
Cabinets over W/D area	\$390	3" Cabinet cove molding	\$159
60" Palisade Shower	\$1200	Drawers over doors in kitch	\$395
High rise toilets	\$200	Full Mosaic backsplash	\$1045
3 Arm light bars	\$195	Stainless Smooth top Range	\$250
24" Wood framed vanity	\$240	25 c.f SxS Stainless 2dr Fridge	\$650
9 Lite ext door IPO std	\$270	Stainless Dishwasher	\$730
		Stainless Microwave over range	\$295